

(21) Application No 9713190.8
 (22) Date of Filing 24.06.1997
 (30) Priority Data
 (31) 08678924 (32) 12.07.1996 (33) US

(71) Applicant(s)
International Business Machines Corporation
 (Incorporated in USA - New York)
 Armonk, New York 10504, United States of America

(72) Inventor(s)
Nayeem Islam
Vineet Singh

(74) Agent and/or Address for Service
C Boyce
IBM United Kingdom Limited, Intellectual Property
Department, Mail Point 110, Hursley Park,
WINCHESTER, Hampshire, SO21 2JN,
United Kingdom

(51) INT CL⁶
G06F 17/30

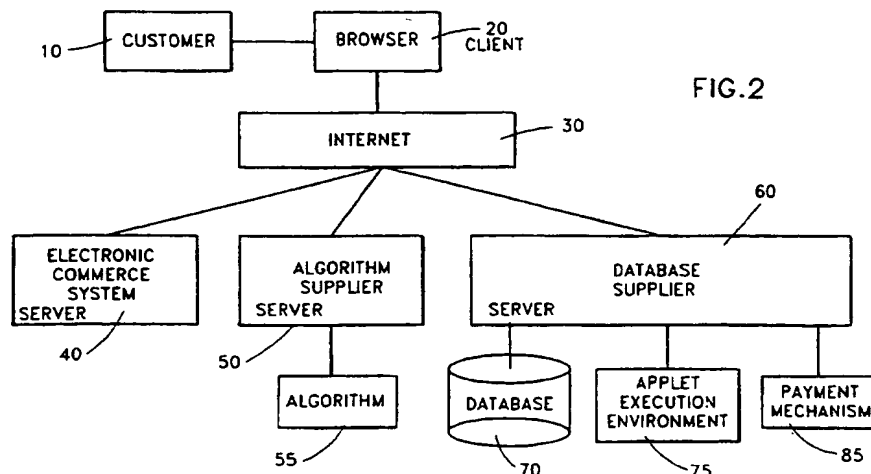
(52) UK CL (Edition P)
G4A AUDB

(56) Documents Cited
EP 0718784 A1

(58) Field of Search
 UK CL (Edition O) G4A AMP AUDB
 INT CL⁶ G06F 17/30
ONLINE: WPI, INSPEC, COMPUTER

(54) **Combining data analysis algorithms with databases on the Internet**

(57) An open architecture for arbitrarily combining data analysis algorithms and databases on the Internet where the data analysis algorithm and database may be from different vendors or suppliers. Customer 10 selects an algorithm 55 from an algorithm supplier 50, and a database 70 from a database supplier 60. The data analysis algorithm 55 is securely relocated to the database supplier 60 and run on the appropriate database using an applet execution environment 75, which enables multi threaded processes constrained to communicate only with the selected database application (fig. 5). As the algorithm 55 runs, partial results are transmitted back to the customer 10 and displayed on the browser 20, so that the customer can decide whether to continue running the algorithm. An electronic commerce system 40 such as SET (Secure Electronic Transaction) may be used for charging for the services and content, and a suitable payment mechanism is described (fig. 6).



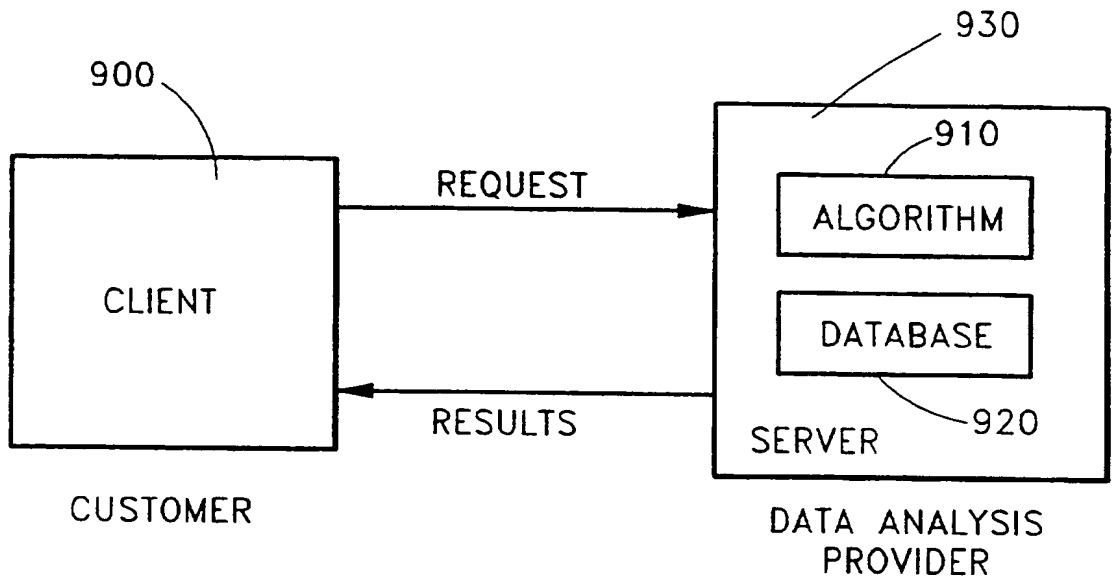


FIG. 1
(PRIOR ART)

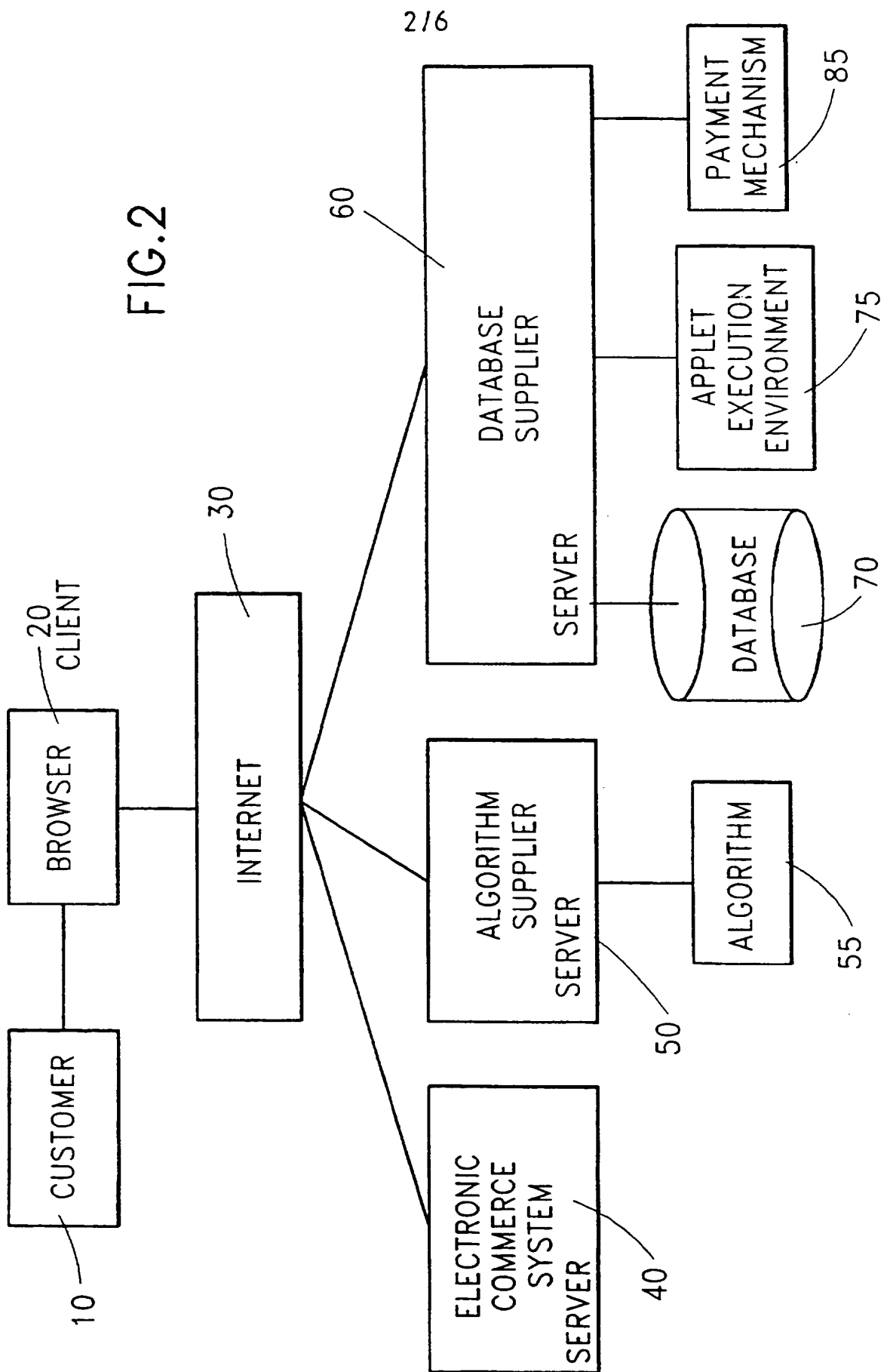


FIG.2

216

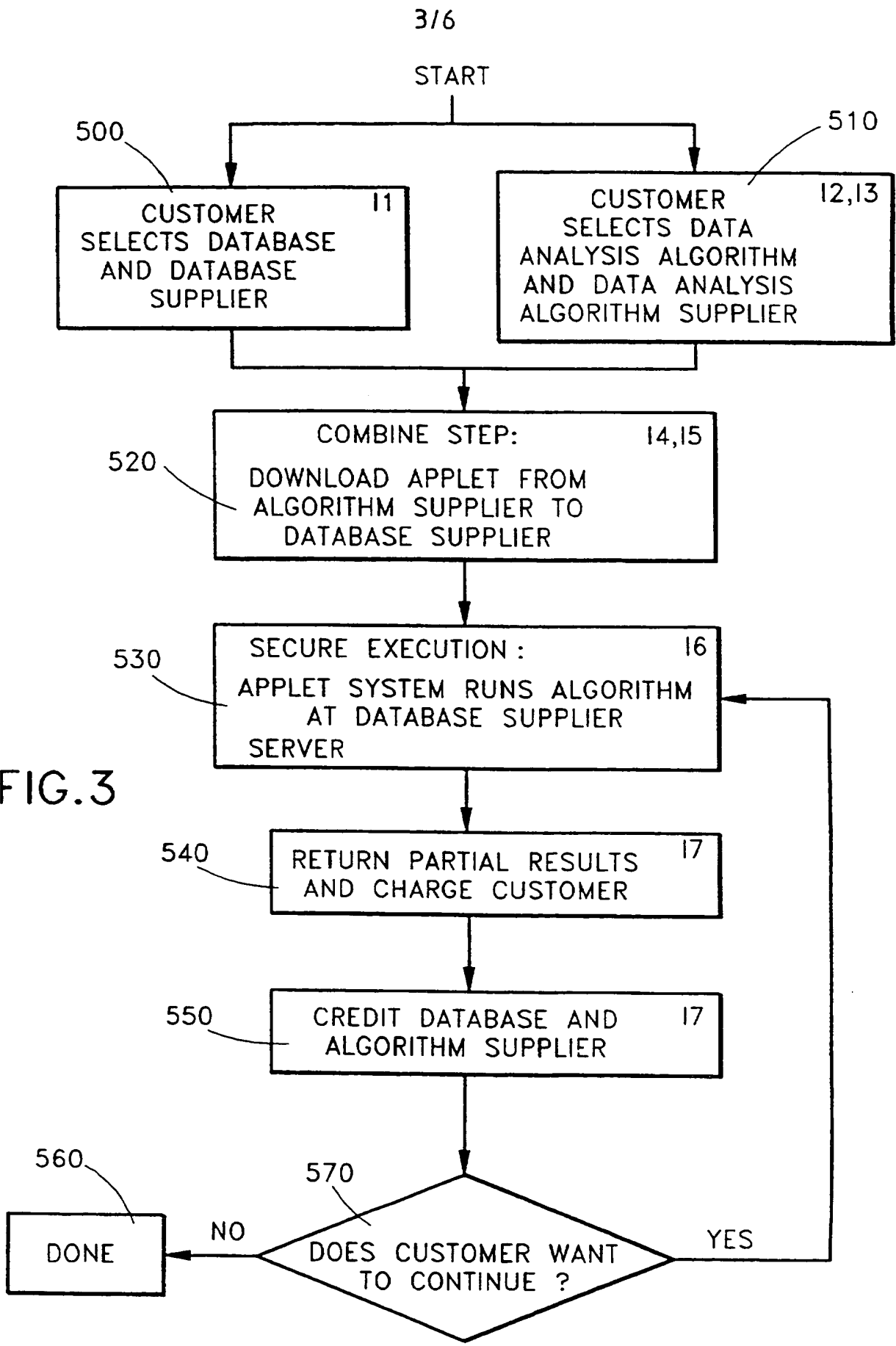


FIG.3

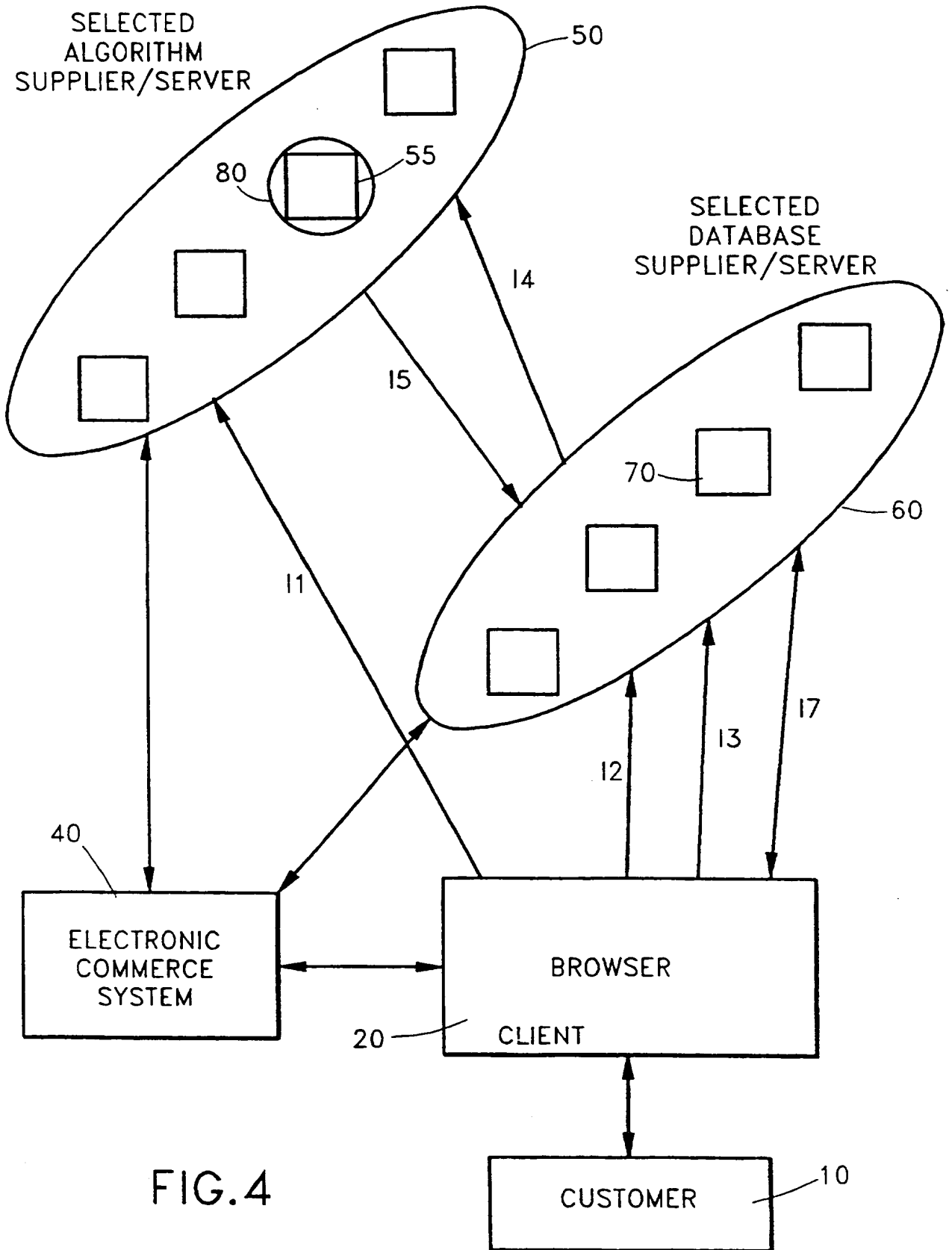


FIG.4

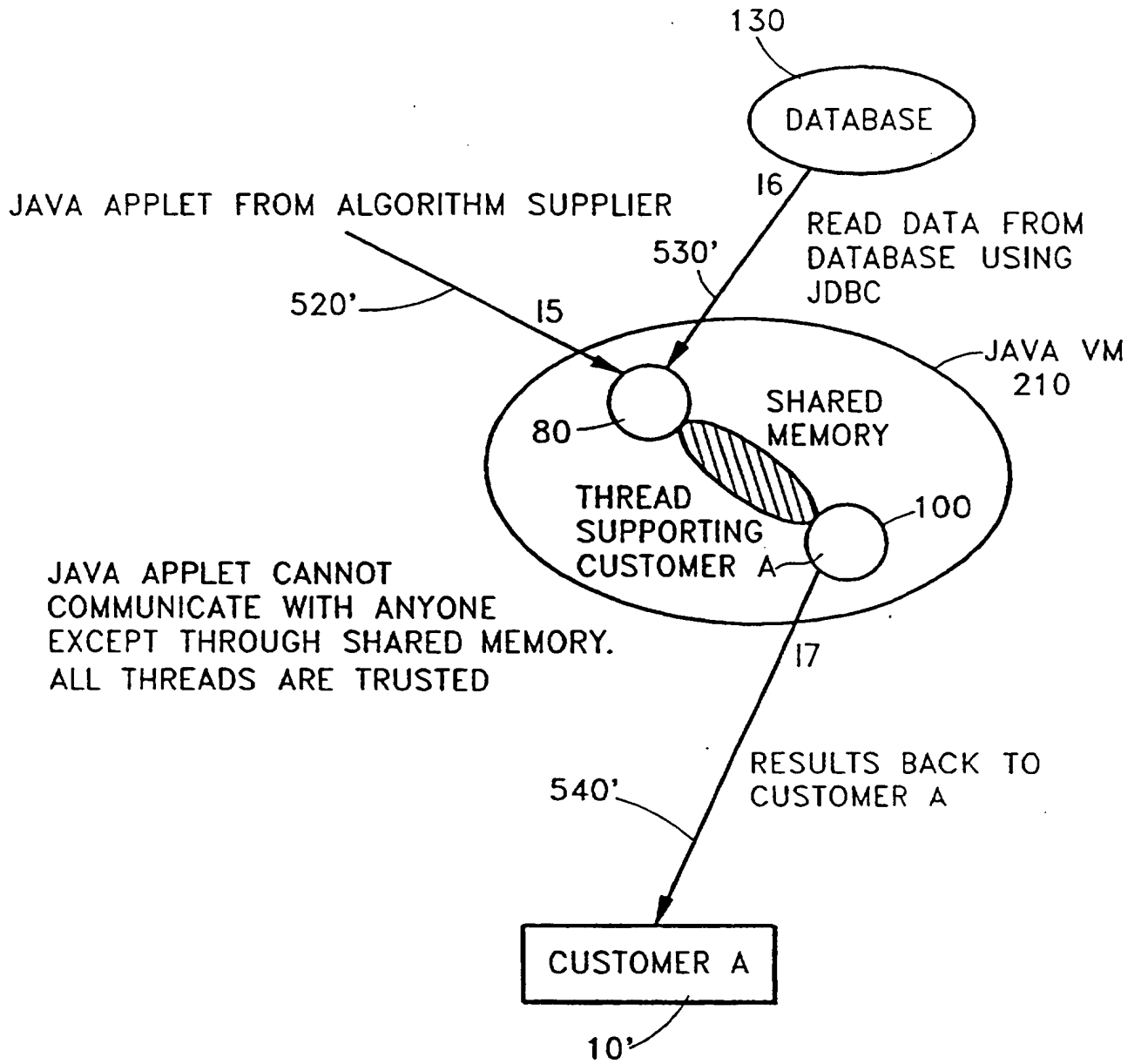


FIG.5

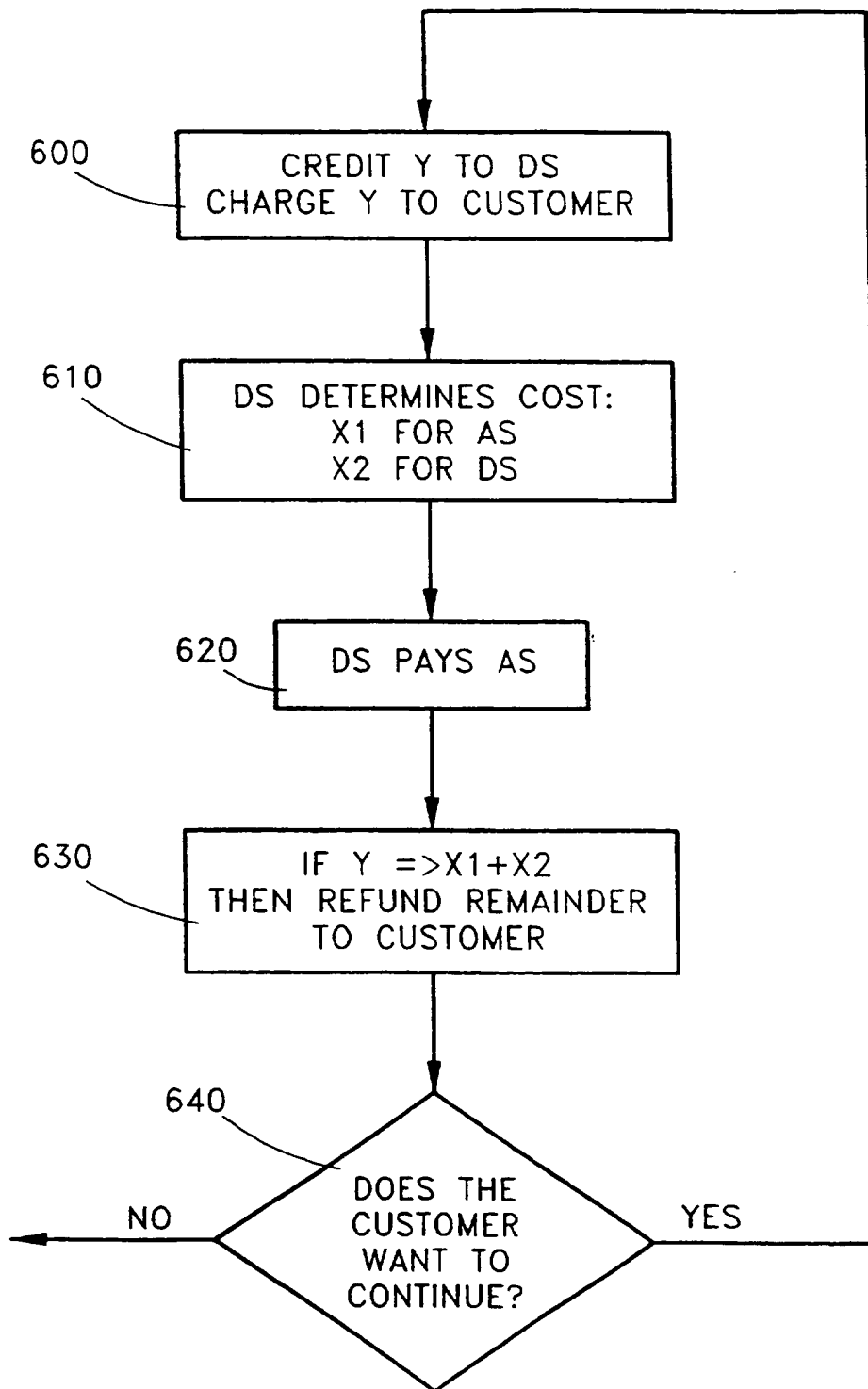


FIG.6

A MECHANISM FOR COMBINING DATA ANALYSIS ALGORITHMS WITH
DATABASES ON THE INTERNET

5 This invention is related to computer systems and particularly to a
method and system for use of the world wide web and Internet. It
provides a mechanism for combining data analysis algorithms and databases
on the Internet.

10 Traditionally, commercial data analysis services have been offered
as a monolithic system in which the data analysis algorithms and database
are part of a single system offering. Figure 1 depicts an example of such
a prior art system. As depicted, a customer 900 interacts with the data
analysis provider 930, gets results, and is charged some price for the
15 results. The data analysis provider has both the data analysis algorithm
910 and the database to be analyzed 920. Potentially, the system can be
implemented as a client-server system where the customer and data
analysis provider interact over some network (possibly the Internet or
Intranets). It is also possible that the data analysis algorithms and the
20 database were developed by different organizations. However, the
data analysis provider that a customer interacts with is a monolithic
system. An example is the Lexis-Nexis service which is provided by a
division of Reed-Elsevier, Inc.

25 More recently, another model of data analysis service has become
prevalent on the Internet. Here, the data analysis algorithms are
supplied by search engines such as Yahoo! (from Yahoo! Corporation) and
Alta Vista (from Digital Equipment Corporation). The database is all web
pages on the Internet - some of them with relational data but they
usually contain unstructured data with text, numbers, figures,
30 images/video, and audio. An index database is constructed either manually
or automatically on a periodic basis. Customer requests for information
trigger a search of the index database and the customer is pointed to
relevant Internet sources. The index and search mechanism taken together
constitute a data analysis algorithm. The data analysis algorithm in
35 these search engines are packaged together with the search engine and are
not subject to replacement dynamically at the request of the customer. In
addition, the search engines and the database are free. Revenue, if any,
is generated by advertising related to various web pages generated by the
search engines.

40 Thus, there is a need for a system available on the Internet

allowing users to dynamically combine service providers, e.g., of data analysis algorithms with independent content suppliers, e.g., of databases. There is also a need for the system to maintain proper security for the proprietary algorithms and databases, and a pricing mechanism whereby the customer is charged for access to the algorithms and databases. The present invention addresses such a need.

An electronic commerce model, Secure Electronic Transaction (SET), has been proposed by major credit and computer vendors including IBM, Microsoft, VISA and Mastercard. This model will be supported by many entities engaging in commerce on the Internet. For example, IBM's merchant server "Net.Commerce" and cyber shopping district "World Avenue" have announced plans to use SET. See URL <http://www.visa.com> for more details on SET.

The present invention is directed to an open architecture for securely combining data analysis algorithms and databases on the Internet where the data analysis algorithm and database may be from different vendors or suppliers.

According to one aspect of the present invention, a computerized method for providing services over a communication network, comprises the steps of: sending a service provider on the network a message including an identifier of a user selected independent content provider and an identifier of a particular service associated with the service provider; in response to the message, sending from the service provider to the content provider, a computer executable code which when executed by the content provider will cause the particular service to be performed against content controlled by the content provider; executing the computer executable code by the content provider; and, returning at least partial results of said executing step to the user by way of the communication network.

Preferably the computer executable code specifies one or more computing resources required, which include one of memory, disk, and CPU time, for rendering the particular service.

Preferably the content provider specifies one or more computing resources available, which may include the memory or disk available for rendering the particular service.

Preferably the step of executing further comprises the step of constraining communications by the computer executable code to an application associated with the content executed against.

5 Preferably the network is the Internet and the service provider, content provider, and the user are communicating with Java enabled machines and the computer executable code is a Java applet (downloadable code fragment).

10 Preferably the present invention comprises the step of billing the user based on one or more of the particular service, the content, and the at least partial results, in response to said returning step.

15 Preferably the present invention includes the step of interactively billing the user for partial results.

Preferably the step of billing the user for partial results interactively is implemented using an electronic commerce model.

20 Preferably the present invention includes the step of crediting the content provider for use of the content and the service provider for the use of the service.

25 Preferably the service provider is a data analysis service provider, the content provider is an independent database provider, the service is a particular data analysis algorithm associated with the service provider, and the content is a database controlled by the database provider.

30 These and other features and advantages of the present invention will become apparent from the following detailed description taken in conjunction with the accompanying drawings, wherein:

35 Figure 1 depicts a prior art system whereby a customer may interact with a commercial data analysis provider;

Figure 2 shows a computer system having features of the present invention;

40 Figure 3 shows a logic flow diagram of a computerized process in accordance with the present invention;

Figure 4 shows a combined computer system and logic flow in accordance with the present invention;

Figure 5 shows a more detailed example of the execution environment of Figure 2, in accordance with the present invention for securely executing the data analysis algorithm at the database supplier; and,

Figure 6 depicts a logic flow diagram for the payment mechanism of Figure 2.

Figure 2 depicts a system having features of the present invention for arbitrarily combining computer services such as a data analysis algorithm 55, which may be provided by a data analysis algorithm supplier 50, with a database 70 which is provided by a database supplier 60. Here, a customer (also called a user) 10 uses a client running a browser 20 to access servers 50, 60 via the Internet 30 and the TCP/IP suite of network protocols. Network protocols provide standard methods for machines to communicate with one another. The protocols indicate how data should be formatted for receipt and transmission across networks. Heterogeneous machines can communicate seamlessly over a network via standard protocols. Examples of standard Internet protocols include: HTTP, see, e.g., "Hypertext Transfer Protocol - HTTP/1.0", <http://www.ics.uci.edu/pub/ietf/http/draftietf-http-v10-spec-03.html>, by T. Berners-Lee, R. Fielding, and H. Frystyk, Sept. 4, 1995; SMTP, see, eg Simple Mail Transfer Protocol. RFC 821, J. B. Postel, Information Sciences Institute USC, August 1982, <http://ds.internic.net/std/std10.txt>.; and, FTP, see e.g., J. Postel and J. K. Reynolds. "File Transfer Protocol (FTP)", RFC 959, Information Sciences Institute, USC, October 1985, <http://ds.internic.net/std/std9.txt>. The client-server model constitutes one of the dominant paradigms in network programming, see, e.g., W. R. Stevens, "Unix Network Programming", Prentice Hall PTR, Englewood Cliffs, NJ, 1990; and D. E. Comer, "Internetworking with TCP/IP" vol 1., Prentice Hall, Englewood Cliffs, NJ, 1991 which is hereby incorporated by reference in its entirety. A server program 40, 50, 60 offers a service which can be accessed by multiple users over the network. A program becomes a client 20 when it sends a message to a server and waits for a response from the server 40, 50, 60. The client process, which is typically optimized for user interaction, uses the requested service without having to know any of the detailed workings of the requested service or server. On the World Wide Web "browsers"

constitute client programs while the programs sending back information to the browser constitute server programs. As is conventional, a web server has an HTTP Daemon (HTTPD) running which is typically supported by an access agent which provides the hardware connections to machines on the intranet and access to the Internet, such as TCP/IP couplings. Examples of HTTPD are the IBM OS/2 Web Server or any other server having Hypertext Markup Language and Common Gateway Interface capability.

According to the present invention, a customer 10 locates an algorithm 55 from an algorithm supplier 50 (also called a method server), and a database 70 from a database supplier 60 (also called a content server). Then, the data analysis algorithm 55 is securely relocated to the database supplier 60 and run on the appropriate database 70 using an applet execution environment 75 (described later with reference to Figure 5). The results of the search are displayed on a browser 20. Examples of such browsers are those sold by IBM under the trademark WebExplorer, and by Netscape under the trademark Netscape Navigator.

According to another aspect of the present invention, as the algorithm 55 runs, partial results are transmitted back to the customer 10. The customer 10 then decides whether to continue running the algorithm on the database (DB) 70. The customer 10 is also incrementally charged, each time the customer 10 requests that the algorithm 55 continue to run, the customer 10 is charged. An electronic commerce system 40 such as SET may be used for charging for the combined services and content access on the Internet. According to yet another aspect of the present invention, the charges are determined by a payment mechanism 85 (described later with reference to Figure 6) at the database supplier.

According to still another aspect of the present invention, both the algorithm supplier 50 and the database supplier 60 are credited for running the algorithm. The amounts to be credited may be determined by the database supplier 60.

Those skilled in the art will appreciate that within the scope of the present invention a broker may act as an intermediary between the customer and the algorithm and database suppliers. Such a broker may locate suppliers and mediate the collection of partial results. A specific example of using a trusted third party to provide a description of an information product to potential buyers without disclosing the entire contents of the information products can be seen in the

aforementioned co-pending patent application by Chess.

Figure 3 depicts a logic flowchart of the interactions within the computer system shown in Figure 2. A browser 20 is used to surf the Web and display information for the customer 10. As depicted, in step 500, the customer 10 locates the appropriate database 70. In step 510, the customer 10 selects a specific data-analysis algorithm. This may involve a web search or the customers 10 may already have the URL of the algorithm supplier 50 and/or database supplier 60. The algorithm supplier 50 may provide the minimum resource requirements (memory, disk, time) as a function of database size for the selected algorithm. The supplier may optionally provide a function that gives a time estimate for resources (memory, disk) greater than the minimum. The database supplier 60 may similarly specify the resources (memory, disk) available for Internet data-analysis and/or the size of the relevant database. In step 520, the customer 10 passes the algorithm name and URL of algorithm supplier 50 to the database supplier 60. The customer 10 may optionally specify that additional resources (memory, disk) be used rather than the minimum. The DB supplier 60 locates algorithm supplier 50 and downloads the appropriate data analysis algorithm. In a preferred embodiment, (described with reference to Figures 4 and 5) the data analysis algorithm is a downloadable code fragment such as a Java applet. Each downloadable code fragment is preferably verified to ensure that it conforms to the underlying execution environment 75. Alternatively, if the algorithm supplier 50 is trusted by the DB supplier 60, a binary of the algorithm may be downloaded to the DB supplier 60. In step 530, the downloadable code fragment 80 is then run at the execution environment at the database supplier 60. In step 550, the execution environment 75 enables multi threaded processes which can be constrained to communicate only with the selected database application. A thread in the database execution environment 75 may be used to support each customer 10 transaction. In step 540, the Database supplier 60 returns at least partial results to the customer 10. The customer 10 may be charged (discussed later with reference to Figure 6) for each round of partial results. In a preferred embodiment, an electronic commerce model 40 such as SET is adopted to charge customers 10 and credit the database and data analysis algorithm suppliers 50, 60. In step 570, if the customer wants to continue, the process repeats at step 530. Otherwise, in step 560, the process ends.

Figure 4 shows an example of a combined computer system and logic flow in accordance with the present invention. In this embodiment, the

execution environment 75 comprises a Java virtual machine (described in more detail with reference to Figure 5) and the downloadable code fragment is a Java applet. Java is a well known computer programming language, developed by Sun Microsystems, for the Internet. See, for example, "The Java Handbook," by Patrick Naughton, Osborne McGraw-Hill (1996). See also URL <http://www.javasoft.com/java.sun.com/source.html>. As depicted, pairs of components that interact are connected by directional lines I1 through I7 (uni-directional or bi-directional) indicating flow of data or control. There are seven interactions that take place between the various participants as enumerated below:

1. The customer 10 selects a specific data-analysis algorithm. This may involve a web search or the customer 10 may already have the URL of the algorithm supplier 50. The algorithm supplier 50 provides the minimum resource requirements (memory, disk, time) as a function of database size for the selected algorithm. The supplier may optionally provide a function that gives a time estimate for resources (memory, disk) greater than the minimum. A browser 20 is used to display the information for the customer 10.

2. The customer 10 locates the appropriate database. The customer can perform a web search or the customer may already have the URL for a database supplier 60. The database supplier 60 may also specify, the resources (memory, disk) available for Internet data-analysis and the size of the relevant database.

3. The customer 10 passes the algorithm name and URL of algorithm supplier 50 to the database supplier 60. The customer 10 may optionally specify that additional resources (memory, disk) be used rather than the minimum.

4. The DB supplier 60 locates algorithm supplier 50.

5. The DB supplier 60 downloads the appropriate applet 80.

6. Each applet 80 is preferably first verified by the Java code verifier which ensures that the applet conforms to the underlying applet system. Second, the code's security credentials and resource constraints are validated using a modified Java code verifier. The aforementioned copending patent application by Anand et al., entitled "A Uniform Mechanism for Using Signed Content," which has been incorporated by

reference, describes a mechanism for applets to access system resources in a controlled manner. This mechanism allows a Java Applet to access parts of the file system other than those specified statically using the CLASSPATH variable and allows applets to communicate with servers other than the one that the applet was downloaded from. This second verification step requires the use of the technology described in Anand et al. In this case, the present invention may stamp each applet with security and resource credentials that specify where the applet came from and what resources the applet will use. If the origins of the applet are trusted then so are the resource constraints. Java provides that the downloaded applet can either be compiled to run on the native machine's code or it may be interpreted. If the algorithm supplier 50 is trusted by the DB supplier 60, it can ship a binary of the algorithm to the DB supplier 60. The applet 80 is then run on the database supplier 60.

Java also provides a multi threaded programming paradigm. See, e.g., Naughton, pp. 181-199. The applet is preferably constrained to run so that it cannot communicate with applications besides the database. A system thread 100 in the database applet system may be used to support each customer 10 transaction.

7. The DB supplier 60 returns results (potentially partial results) to the customer 10. A pricing mechanism (discussed later) may be used to charge the customer 10 for each round of partial results.

Preferably, an electronic commerce model 40, such as SET, is adopted to charge customers 10 and credit the database and data analysis algorithm suppliers 50, 60.

Those skilled in the art will appreciate that the interactions can easily be changed so that customers 10 interact with the algorithm supplier 50 solely except to select the DB supplier 60. In this case, interaction 3 above is changed so that the customer 10 passes the database name and URL of the database supplier 60 to the algorithm supplier 50. Interaction 4 is changed so that the algorithm supplier 50 locates the database supplier 60. Also, interaction 5 may be changed so that the algorithm supplier 50 uploads the applet 80 to the database supplier 60.

The only essential dependencies in the interactions above are as follows: Interactions 1 and 2 occur in any order but must occur before

interaction 3. Interactions 3, 4, 5, 6, and 7 occur in that order. Interaction 7 may occur multiple times as partial results are returned to the customer 10 and the customer 10 is charged for the algorithm usage, database access, and partial results returned.

5

Note that one or more of the logical participants given above may map to a single physical participant.

10

15

Those skilled in the art will also appreciate that this architecture is recursive in the following sense. The database supplier 60 may actually obtain its data by being the customer 10 that buys data analysis services over the Internet. Conversely, the customer 10 in Figure 4 may turn around and be the database supplier 60 for another data analysis transaction with another group of participants. In other words, a participant that is a customer 10 in one transaction may be a supplier in another transaction.

20

A broker can also be added to act as an intermediary between the customer 10 and the other parties. The customer 10 interacts with the broker alone as a one-stop supplier. The broker interacts with the algorithm supplier 50 and database supplier 60 as described above (as if the broker were the customer 10 in Figure 4).

25

The following protocols can be used to implement the interactions in Figure 4. Interactions I1, I2, I3, and I7 may be implemented by using the HTTP protocol. Interactions I4 and I5 may be implemented using the Java downloading protocol. All interactions with the electronic commerce system maybe implemented using the SET (see <http://www.visa.com/cgi-bin/vee/sf/set/intro.html?2+0>) protocol.

30

35

In our preferred embodiment the customer (user) 10 has access to the Netscape browser. At the customers request, the browser obtains a list of databases, data analysis algorithms and their suppliers from the Web via a standard search engine such as Yahoo!. As is conventional, the customer chooses a database 70 and a data analysis algorithm 55 by clicking on the appropriate images which are displayed on the browser using HTML.

40

The customer may input a maximum amount of money he would like to spend initially. Then the customer clicks the go button (representing a conventional hyperlink) to initiate the transaction. A request is sent to

the database supplier 60 in the form of an http request. As is conventional, the database supplier has a http daemon (httpd) running that is Java enabled (see, e.g., Naughton, pp. 244-249).

5 Figure 5 shows a more detailed example of an execution environment
75 in accordance with the present invention for securely executing the
data analysis algorithm at the database supplier. As depicted, the
database supplier's http daemon communicates with the data analysis
algorithm supplier through the Java language to download 520' the applet,
10 using Java's internal protocol for downloading applets. The results are
returned 540' to the customer using http and displayed using html. In our
preferred embodiment we assume that the database supplier has the Java
execution environment 210 running and that the Java on the database
supplier is JDBC enabled 530'. JDBC is a well known and evolving Java
15 application programming interface (API) to SQL databases. It is being
developed by the JavaSoft division of Sun Microsystems. See URL
<http://splash.javasoft.com/jdbc/> for more details on JDBC. The JDBC
library calls the database 130 using SQL. An exemplary database and
database management system is that sold by IBM under the trademark "DB2".

20 The algorithm supplier 50 provides data analysis algorithms written
as Java applets. The applets reside at the data analysis algorithm server
50. The chosen applet is downloaded to the database supplier and run.

25 Preferably, the applet runs in a thread which is constrained not to
communicate outside the server it is running on. Java also provides a
pool of system threads 100 that are constantly running (see'
<http://www.javasoft.com/java.sun.com/source.html>). According to one
aspect of the present invention, a system thread 100 may be used to
30 co-ordinate iterations with the customer 10'. When the Java applet
containing the data analysis algorithm is downloaded, it registers itself
with one of threads in the system thread pool. The downloaded applet
communicates with the system thread 100 which in turn communicates 540'
with the customer. These threads act as proxies which is similar to how
35 the JAVA window system, Active Window Toolkit (AWT), is structured.

40 The system thread 100 communicates partial results to the customer,
and determines whether or not the algorithm should continue executing
after providing partial results to the customer. Thus, it may terminate
the execution of the data analysis algorithm at any time. As is
conventional, the data analysis algorithm may not write to local file

storage or the data base.

Partial results are displayed on the browser 20. The actual display depends upon the content and the type of query. For example, a data analysis query to an image database could create a linked list of images, one per page.

The appropriate amount of money is subtracted from the customer's initial payment. If the customer presses a continue button, then the computation continues. Using the SET protocol, the customer requests some data analysis service in exchange for a payment of Y dollars. After the initial set of partial results, the customer either continues receiving results or terminates the transaction. The SET electronic commerce protocol allows a merchant to refund a customer partially after completing a payment transaction where a customer is charged for some product and the merchant is credited the same amount. If the transaction is terminated, the customer is credited the unspent money using the SET protocol. The database supplier and the algorithm supplier are credited with appropriate amounts.

If the electronic commerce protocol does not have a credit mechanism to make adjustments after the customer has paid for a transaction, the amount Y can be kept suitably low so that the customer does not lose too much.

According to one aspect of the present invention, customers 10 pay for partial results interactively. They start by paying amount X, and then continue depending upon the partial results they receive. If the customer 10 wants to end the transaction at any time, the unspent money is returned to the customer 10. The SET commerce model 40 allows such a protocol to be implemented.

To determine the price of partial results, the DB may add the cost for the algorithm, the cost of data accessed from the DB, the cost of resources used (memory, disk, CPU cycles), and the cost of data transmitted to the customer 10.

The cost to the customer 10 is:

$$\text{Customer-Price} = (\text{price-of-algorithm/unit-time}) * \text{time used} \\ + \text{price-of-data-accessed-from_database}$$

- + price_of_resources used
- + price-of-data-sent-to-customer

5 Different data in the database as well as different databases may
have different prices associated with them. The price of data sent to the
customer 10 may be a suitably large flat amount per bit. If the customer
10 supplies the data-analysis algorithm and tries to send back the entire
database to the customer 10, the cost per bit approach acts as an
inhibitor to such activity unless of course the customer 10 really wants
10 the entire database. By charging appropriate prices, the DB supplier 60
can provide sufficient incentive for customers 10 to do data-analysis on
the DB supplier 60 computer and collect some valuable summarized result
as opposed to copying the entire database.

15 Figure 6 depicts a logic flow chart for the payment mechanism of
Figure 2. The SET protocol or some other electronic commerce protocol may
be used for the payment transactions. Before the data analysis algorithm
is run at the database supplier, an initial amount Y is charged to the
customer's account and the same amount is credited to the database
20 supplier in step 600. After the data analysis algorithm has been run (to
partial completion) so that the combined amount to be credited the
database and algorithm suppliers is less than or equal to Y, partial
results are returned to the customer and the database supplier computes
the exact amounts X1 and X2 to be credited to the algorithm and database
25 suppliers respectively in step 610. The database supplier pays the
algorithm supplier the amount X1 in step 620. In step 630, the database
supplier returns Y minus (X1 + X2), the excess amount to the customer. In
step 640, the database supplier finds out from the customer whether he or
she wants to continue further with the data analysis algorithm execution.
30 If yes, the previous steps are repeated. Otherwise, the payment
transactions are done.

The roles of AS and DS are reversible in the payment transactions.
If the roles are reversed, the DS must still compute the cost function in
35 step 610 but the AS will return the results to the customer 10. As an
optimization, the refunds may be returned to the customer 10 in one
action rather than at the end of each iteration.

40 The Algorithm supplier 50 typically trusts the DB supplier 60 as
does the customer 10. The DB supplier 60 does not typically trust anyone.
However, under special arrangements, the DB supplier 60 may trust an

algorithm supplier 50. The meaning of trust is as follows. The AS trusts that the DS will compute and credit the AS with the correct amount. The customer 10 trusts that the DS will charge it fairly or according to a published fee schedule.

5

Each algorithm may be leased for a period of time (say by the hour, day, month, etc.) after which it self destructs. Continued use of an algorithm by a DB is allowed by another transaction with the AS. A new instance of the algorithm is then loaded. Algorithms preferably can checkpoint and recover after partial result generation. The DB supplier 60 tells the Algorithm supplier 50 how long the algorithm was used.

10

The JavaVM in all the figures could be substituted by ActiveX (a trademark of Microsoft Corp), and Windows95 (a trademark of Microsoft Corp).

15

The technology of the US application number 661687 may be used to allow the downloaded applet to communicate with the customer without the use of the system thread 100. In this technology, the applet comes with resource requirements and security credentials as is described by Anand et al. Resource requirements include file access and a trusted Domain Name Server (DNS). Security credentials include digital signatures. The DNS is used to translate character string names to IP addresses which can then be used to communicate with entities other than the server from where the applet originated. The applet also comes with a list of files it wants to access. The modified Java verifier checks the validity of the trusted DNS and list of files to be accessed when the applet is loaded. An enforcement module ensures that the behavior of the applet conforms to the resource requirements and that the security credentials are not violated at runtime as is described in Anand et al. Preferably, the interactions labeled I1-I5 and I7 in Figure 4 may be encrypted using the secure sockets layer protocol (ssl) (<http://www.netscape.com>).

20

25

30

Glossary of terms

35

Internet The network of networks and gateways that use the TCP/IP suite of protocols.

Client A client is a computer which issues commands to the server which performs the task associated with the command.

40

Server Any computer that performs a task at the command of another computer is a server. A Web server typically supports one or more clients.

5 **World Wide Web (WWW or Web)** The Internet's application that lets people seeking information on the Internet switch from server to server and database to database by clicking on highlighted words or phrases of interest (hyperlinks). An Internet WWW server supports clients and provides information. The Web can be considered as the Internet with all
10 of the resources addressed as URLs and which uses HTML to display the information corresponding to URLs and provide a point-and-click interface to other URLs.

Universal Resource Locator (URL) A way to uniquely identify or
15 address information on the Internet. Can be considered to be a Web document version of an e-mail address. They can be accessed with a Hyperlink. An example of a URL is "http://www.arun.com:80/table.html". A URL has four components. Starting from the left, the first specifies the protocol to use, separated from the rest of the locator by a ":". Next is
20 the hostname or IP address of the target host; this is delimited by the "/" on the left and on the right by a "/" or optionally a ":". The port number is optional, and is delimited on the left from the hostname by a ":" and on the right by a "/". The fourth component is the actual file name or program name. In this example, the ".html" extension means that
25 this is an HTML file.

HyperText Markup Language (HTML) HTML is the language used by Web servers to create and connect documents that are viewed by Web clients. HTML uses Hypertext documents. Other uses of Hypertext documents are
30 described in U.S. Patents 5,204,947, granted April 20, 1993 to Bernstein et al.; 5,297,249, granted March 22, 1994 to Bernstein et al.; 5,355,472, granted October 11, 1994 to Lewis; all of which are assigned to International Business Machines Corporation, and which are incorporated by reference herein.

35 **Hypertext transfer protocol (HTTP)** HTTP is an example of a stateless protocol, which means that every request from a client to a server is treated independently. The server has no record of previous connections. At the beginning of a URL, "http:" indicates the file
40 contains hyperlinks.

Internet Browser or Web browser A graphical interface tool that runs Internet protocols such as http, and displays results on the customers screen. The browser can act as an Internet tour guide, complete, with pictorial desktops, directories and search tools used when a user "surfs" the Internet. In this application the Web browser is a client service which communicates with the World Wide Web.

HTTP Daemon (HTTPD) A server having Hypertext Markup Language and Common Gateway Interface capability. The HTTPD is typically supported by an access agent which provides the hardware connections to machines on the intranet and access to the Internet, such as TCP/IP couplings.

Applet Downloadable code fragment.

Applet system System that can securely download code and execute it.

Java A computer programming language developed by Sun Microsystems for programming on the Internet.

Secure Electronic ansaction (SET) protocol A protocol for doing secure electronic transactions on the Internet to purchase goods or services using credit cards.

Data Analysis Algorithm A computer process that analyzes data to infer properties of the data.

Database A repository of data or information.

CLAIMS

1. A computerized method for providing services over a communication network, comprising the steps of:

5

sending a service provider on the network a message including an identifier of a user selected independent content provider and an identifier of a particular service associated with the service provider;

10

in response to the message, sending from the service provider to the content provider, a computer executable code which when executed by the content provider will cause the particular service to be performed against content controlled by the content provider;

15

executing the computer executable code by the content provider and

returning at least partial results of said executing step to the user by way of the communication network.

20

2. The method of Claim 1 wherein the computer executable code specifies one or more computing resources required, which include one of memory, disk, and CPU time, for rendering the particular service.

25

3. The method of Claim 1 wherein the computer executable code specifies one or more computing resources available, which include one of memory, and disk, for rendering the particular service.

4. The method of Claim 1, further comprising the steps of :

30

selecting by a user, the service provider and the particular service: and,

selecting by a user, the content provider.

35

5. The method of Claim 4, further comprising the steps of :

in response to said selecting step, the user communicating the message to the content provider; wherein said step of sending a service provider on the network a message is performed by the content provider, in response to the message communicated from the client.

40

6. The method of claim 4, further comprising the steps of :

in response to said selecting step, the user communicating the message to the service provider.

5

7. The method of claim 1, wherein said step of executing further comprises the step of:

constraining communications by the computer executable code to an application associated with the content executed against.

10

8. The method of claim 1, wherein the network is the Internet and the service provider, content provider, and the user are communicating with Java enabled machines and wherein the computer executable code is an applet.

15

9. The method of claim 1, further comprising the step of billing the user based on one or more of the particular service, the content, a computing resource used, and the at least partial results, in response to said returning step.

20

10. The method of claim 9 further comprising the step of interactively billing the user for partial results.

25

11. The method of claim 10, wherein said step of billing the user for partial results interactively is implemented using an electronic commerce model.

30

12. The method of claim 11, further comprising the step of crediting the content provider for use of the content and the service provider for the use of the service.

35

13. The method of claim 1, wherein the service provider is a data analysis service provider, the content provider is an independent database provider, the service is a particular data analysis algorithm associated with the service provider, and the content is a database controlled by the database provider.

40

14. The method of claim 1 wherein the communications network includes the World Wide Web (WWW), the service provider is a data analysis service provider, the independent content provider is an independent database

provider and the particular service is a data analysis algorithm, the computer executable code is an applet which when executed by the content provider will cause a query to be performed against the database controlled by the database provider; and when executing the applet by the database provider, the applet is constrained to restrict communication to an application associated with the database.

15. The method of claim 14, further comprising the step of billing the user based on one or more of the particular data analysis algorithm, database, a computing resource used, and the at least partial results, in response to said returning step; wherein the data analysis service provider, database provider, and the user are communicating with Java enabled machines.

16. A computer system for providing services over a communication network including a plurality of servers, the system comprising:

a client coupled to the network and adapted for communicating requests from a user;

the client and the servers including a communication mechanism for sending a service provider on the network a message including an identifier of the user selected independent content provider and an identifier of a particular service associated with the service provider;

the servers including a downloading mechanism for sending from the service provider to the content provider, a computer executable code which when executed by the content provider will cause the particular service to be performed against content controlled by the content provider, in response to the message;

an execution mechanism, coupled to the downloading mechanism, for executing the computer executable code by the content provider and, means for returning at least partial results of said executing step to the user by way of the communication network.

17. The system of claim 16, further comprising:

the client being adapted for communicating the message to the service provider and the service provider being adapted for sending the computer executable code in response to the message communicated from the

client.

5 18. The system of claim 16, further comprising an electronic commerce system, coupled to the network, for interactively billing the user based on the at least partial results.

10 19. The system of claim 18 further comprising a computerized payment means, coupled to the database supplier for determining a cost to the user for the at least partial results.

15 20. The system of claim 16 wherein the communications network includes the World Wide Web (WWW), wherein the service provider is a data analysis service provider, the independent content provider is a database provider and the services is a data analysis algorithm; the executable code is a downloadable code fragment which when executed by the content provider will cause a query to be performed against a database controlled by the database provider;

20 said execution mechanism executes the downloadable code fragment against the database while constraining communications to an application associated with the database.

25 21. The system of claim 20, wherein the service provider, the database provider, and the client are communicating with Java enabled machines and wherein the downloadable code fragment is an applet.

30 22. The system of claim 21, wherein the execution environment at the database provider further comprises:

a multithreading mechanism; and

a shared memory wherein the applet runs in a thread which is constrained to communicate only through the shared memory.

35 23. The system of claim 21, wherein the means for returning at least partial results of said executing step to the user by way of the communication network comprises a system thread, coupled to the applet, the system thread being adapted for communicating the partial results to the Client.

40 24. The system of claim 21 wherein the means for returning at least

partial results of said executing step to the user by way of the communication network comprises a content delivery mechanism, coupled to the applet, for communicating the partial results to the client.



Application No: GB 9713190.8
Claims searched: 1-24

Examiner: Melanie Jennings
Date of search: 21 August 1997

Patents Act 1977
Search Report under Section 17

Databases searched:

UK Patent Office collections, including GB, EP, WO & US patent specifications, in:

UK Cl (Ed.O): G4A (AMP, AUDB)

Int Cl (Ed.6): G06F 17/30

Other: Online: WPI, INSPEC, COMPUTER

Documents considered to be relevant:

Category	Identity of document and relevant passage	Relevant to claims
A	EP 0718784 A1 (SUN MICROSYSTEMS), see figs. 1 & 2	

X	Document indicating lack of novelty or inventive step	A	Document indicating technological background and/or state of the art.
Y	Document indicating lack of inventive step if combined with one or more other documents of same category.	P	Document published on or after the declared priority date but before the filing date of this invention.
&	Member of the same patent family	E	Patent document published on or after, but with priority date earlier than, the filing date of this application.

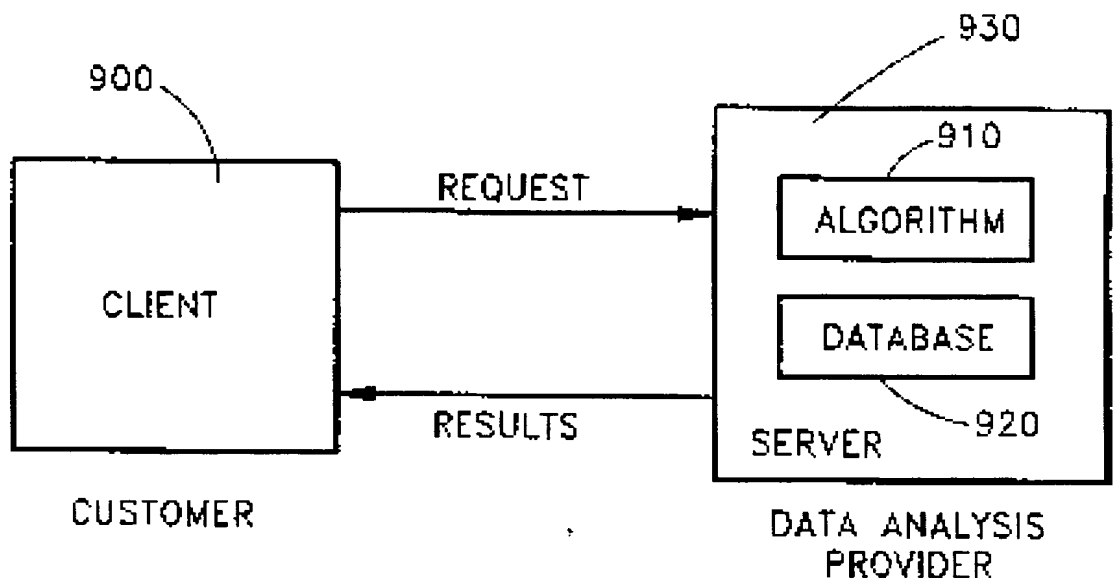


FIG.1
(PRIOR ART)

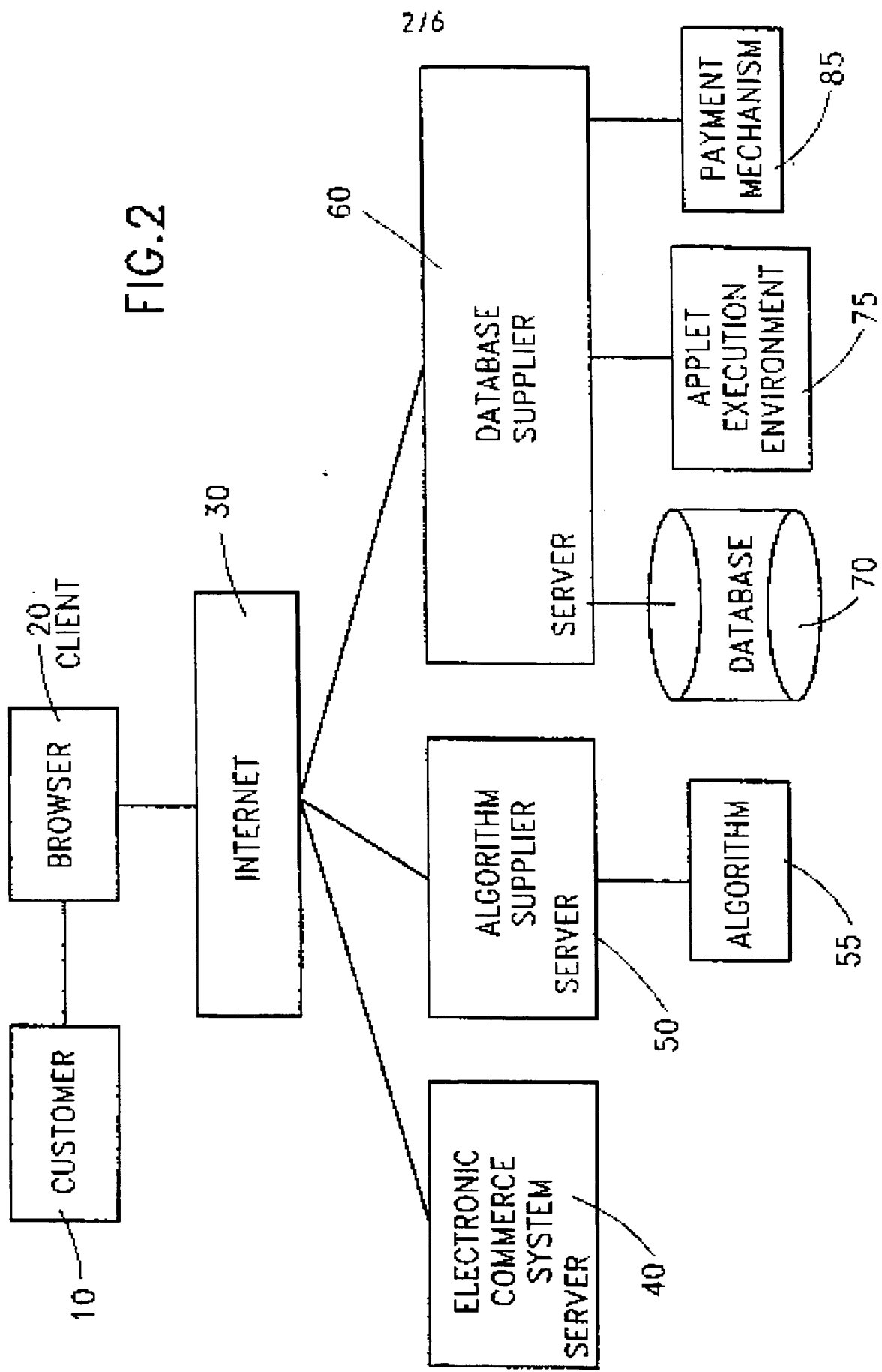


FIG.2

216

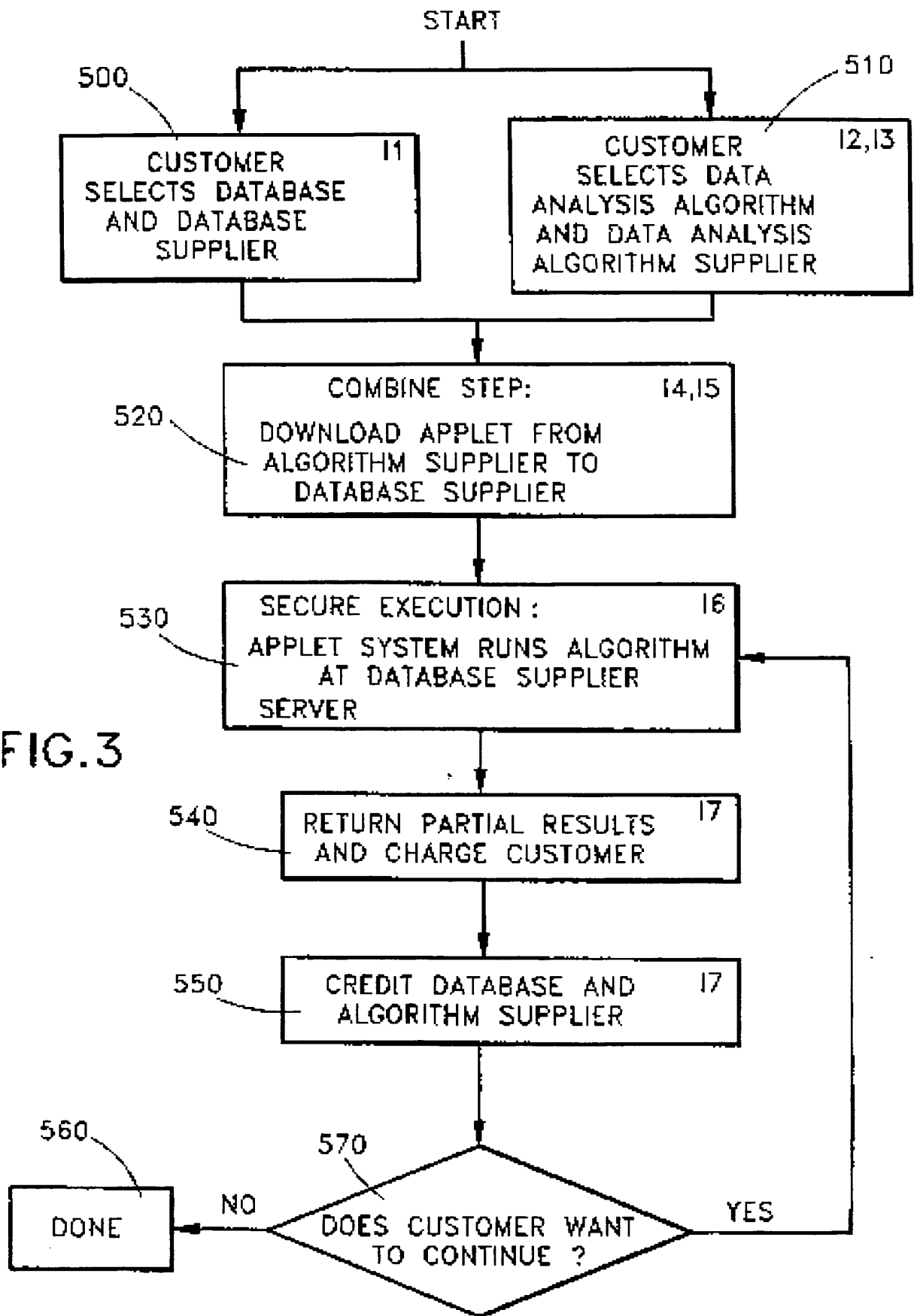


FIG.3

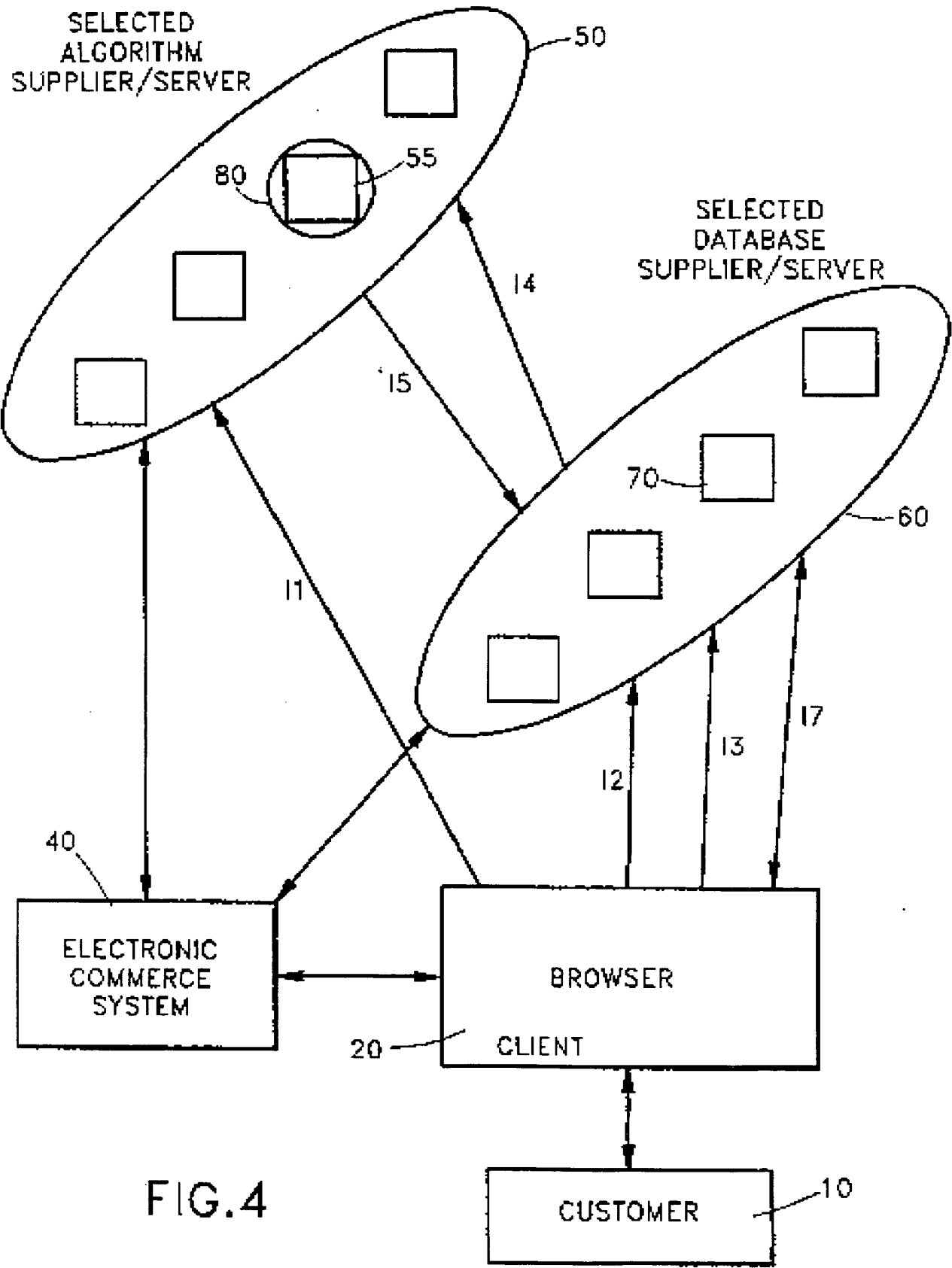


FIG.4

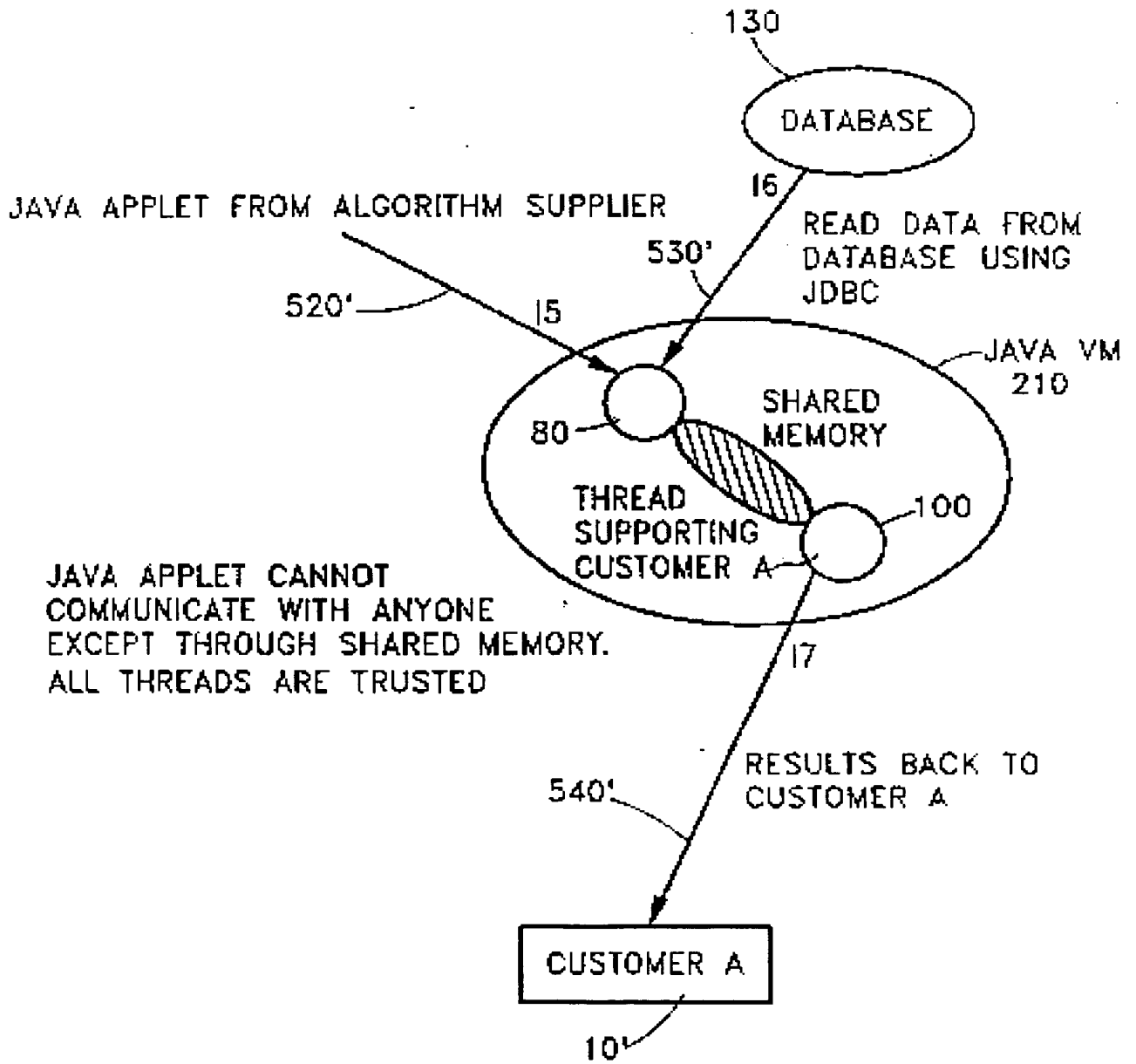


FIG.5

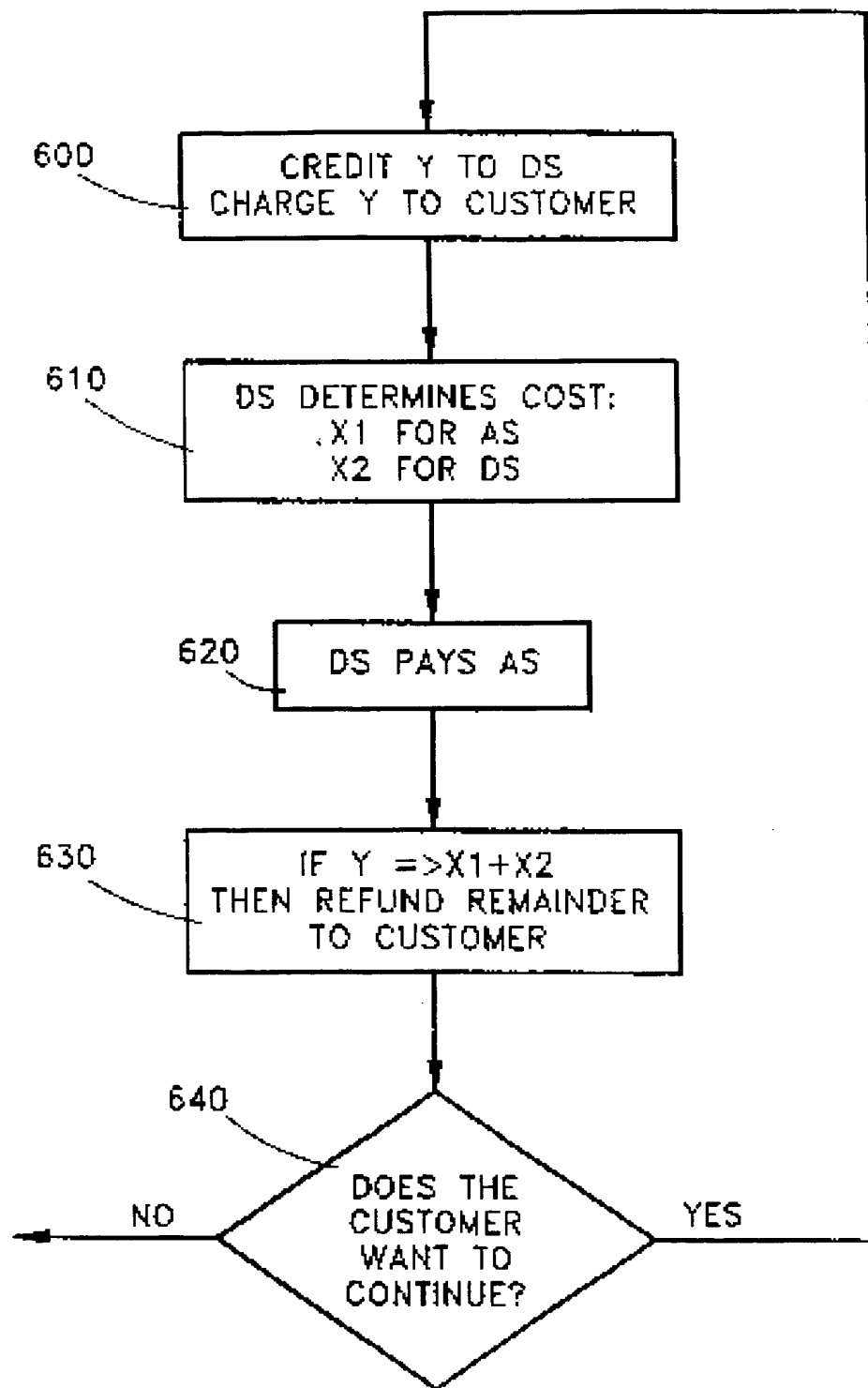


FIG. 6

**This Page is Inserted by IFW Indexing and Scanning
Operations and is not part of the Official Record**

BEST AVAILABLE IMAGES

Defective images within this document are accurate representations of the original documents submitted by the applicant.

Defects in the images include but are not limited to the items checked:

- BLACK BORDERS
- IMAGE CUT OFF AT TOP, BOTTOM OR SIDES
- FADED TEXT OR DRAWING
- BLURRED OR ILLEGIBLE TEXT OR DRAWING
- SKEWED/SLANTED IMAGES
- COLOR OR BLACK AND WHITE PHOTOGRAPHS
- GRAY SCALE DOCUMENTS
- LINES OR MARKS ON ORIGINAL DOCUMENT
- REFERENCE(S) OR EXHIBIT(S) SUBMITTED ARE POOR QUALITY
- OTHER: _____

IMAGES ARE BEST AVAILABLE COPY.

As rescanning these documents will not correct the image problems checked, please do not report these problems to the IFW Image Problem Mailbox.